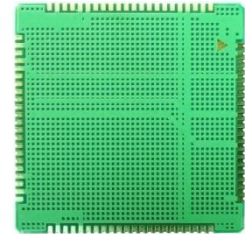


# LTE-FDD/LTE-TDD/HSPA+/GSM MODULE



## SIM7600E-H

The SIM7600E-H is Multi-Band LTE-TDD/LTE-FDD/HSPA+ and GSM/GPRS/EDGE module solution in a SMT type which supports LTE CAT4 up to 150Mbps for downlink data transfer.

It has strong extension capability with rich interfaces including UART, USB2.0, I2C, GPIO etc. With abundant application capability like TCP/UDP/FTP/FTPS/HTTP/HTTPS/DNS, the module provides much flexibility and ease of integration for customer's application.

## Smart Machine Smart Decision

### General features

- TDD-LTE B38/B40/B41
- FDD-LTE B1/B3/B5/B7/B8/B20
- UMTS/HSDPA/HSPA+ B1/B5/B8
- GSM/GPRS/EDGE 900/1800 MHz
- Control Via AT Commands
- Supply voltage range: 3.4V~ 4.2V
- Operation temperature: -40°C to +85°C
- Dimension: 30\*30\*2.9 mm
- Weight: 5.5g
- GNSS gpsOne Gen 8B;standalone;assisted,XTRA

### Specifications for Data transfer

- LTE CAT4
  - Uplink up to 50Mbps,
  - Downlink up to 150Mbps
- HSPA+
  - Uplink up to 5.76 Mbps,
  - Downlink up to 42 Mbps
- UMTS
  - Uplink/Downlink up to 384Kbps
- EDGE Class
  - Uplink/Downlink up to 236.8Kbps
- GPRS
  - Uplink/Downlink up to 85.6Kbps

### Other features

- USB Driver for Microsoft Windows 2000/XP/Vista/Win7/Win8/Win10
- USB Driver for Windows CE
- USB Driver for Linux /Android
- RIL supporting for Android/Windows CE
- Automatic installation for windows
- Firmware update via USB
- TCP/IP/IPV4/V6 Multi-PDP,MT PDP
- FTP/FTPS/HTTP/HTTPS/DNS
- DTMF
- MBIM to Win8
- Source code of the PC manager of the device for reference

### Interfaces

- USB2.0
- UART
- SIM card
- I2C
- Constant current sink
- GPIO
- ADC
- PCM
- SDIO

### Certifications (plan)

- ROHS
- REACH
- CE

More about SIMCom SIM7600E-H  
Please contact:  
Tel: 86-21-32523300  
Fax: 86-21-32523020  
Email: [simcom@sim.com](mailto:simcom@sim.com)  
Website: [www.simcomm2m.com](http://www.simcomm2m.com)